



Plasmon

Using Plasmon Apps to Download Library or Drive Firmware

Products Covered:

D-Series, G Entry, G-Midrange,
Enterprise D, Enterprise G



The following slides will show the steps to successfully perform a firmware upgrade to a Plasmon library or a drive.

Plasmon is not responsible if a download fails and the library becomes non-operational.

Step 1: Review this presentation.

Step 2: Send an email to Plasmon Product Support and request the firmware.

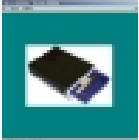
- tech.support@plasmon.com

Step 3: Perform the instructions on the following slides.

Downloading the Firmware

Step 1: Download the correct utility for your library from www.plasmontech.com. The links and programs that apply to your library are located in the table below.

The examples shown in this presentation utilize UDOapp.

	Library Utilities	v UC03 installudoapp	May 06
		Error Log Sheet	

Library or Drives	Program to Download	Website Address
D-Series	InstallDVDApp	http://www.plasmontech.com/customer/d.html
Enterprise D	InstallBDApp	http://www.plasmontech.com/customer/enterprise.html
Enterprise G	Installudoapp	http://www.plasmontech.com/customer/g.html
G Entry Level	Installudoapp	http://www.plasmontech.com/customer/gx.html
G Midrange	Installudoapp	http://www.plasmontech.com/customer/gx.html
UDO 30GB	Installudoapp	http://www.plasmontech.com/customer/g.html
Sony 9.1 GB	Installudoapp	http://www.plasmontech.com/customer/g.html

Step 2: Install the Program that was downloaded. (program name in table below)


•**Note:** Plasmon recommends allowing the program to install into the default directory.

Step 3: Place the firmware received from Plasmon into the proper directory:

Library or Drives	Install Program	Firmware Directory
D-Series	InstallDVDAApp.exe	DVDutil ->Firmware
Enterprise D	InstallBDApp.exe	BigDUtil -> Firmware
Enterprise G	Installudoapp.exe	UDOutil ->Firmware
G Entry Level	Installudoapp.exe	UDOutil ->Firmware
G Midrange	Installudoapp.exe	UDOutil ->Firmware
UDO 30GB	Installudoapp.exe	UDOutil ->Firmware
Sony 9.1 GB	Installudoapp.exe	UDOutil ->Firmware

Step 4: Run the Program

In the directory where the program was installed double click the icon that applies to run the program.

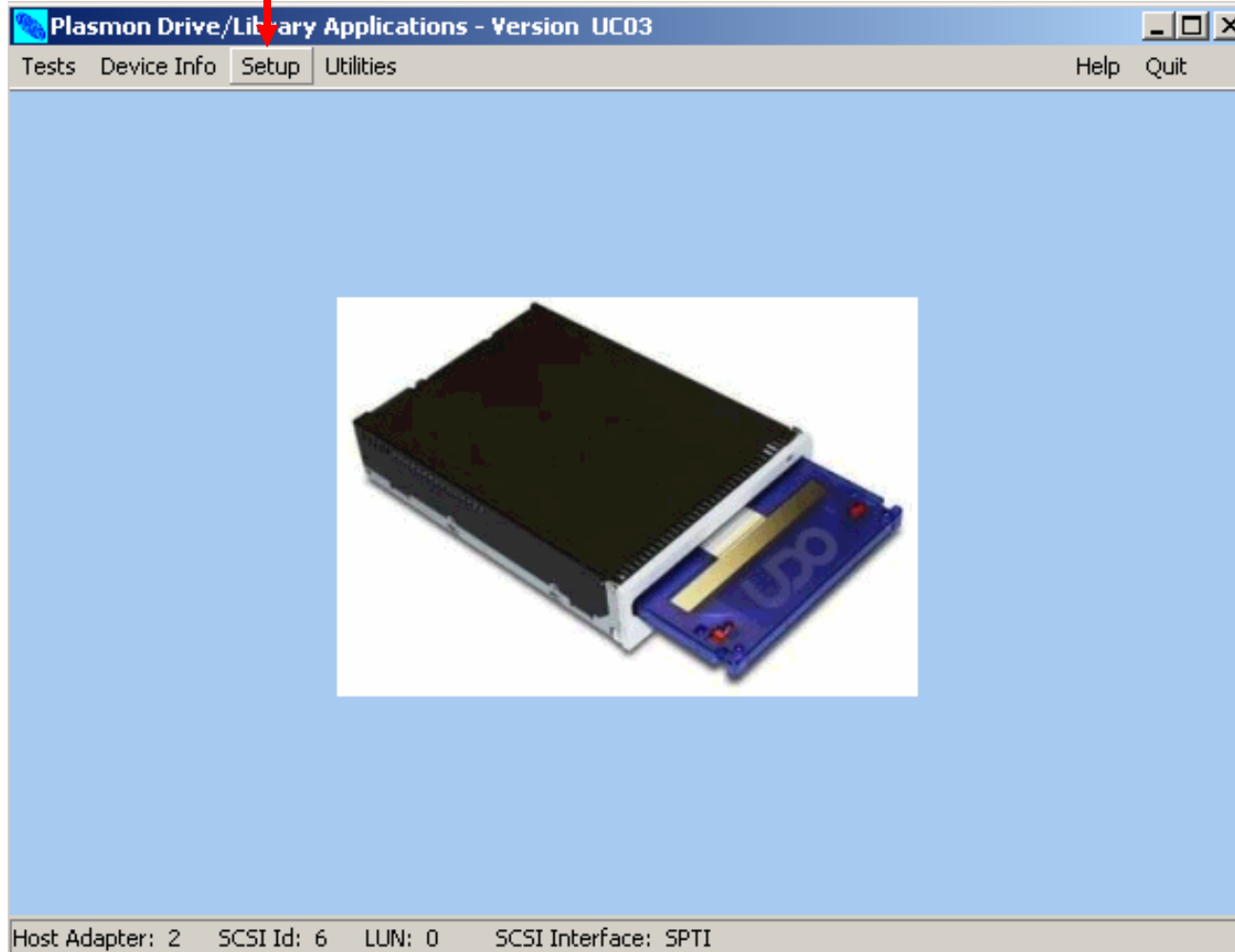
D Series:  DVDapp.exe

Enterprise D:  AppBigD.exe

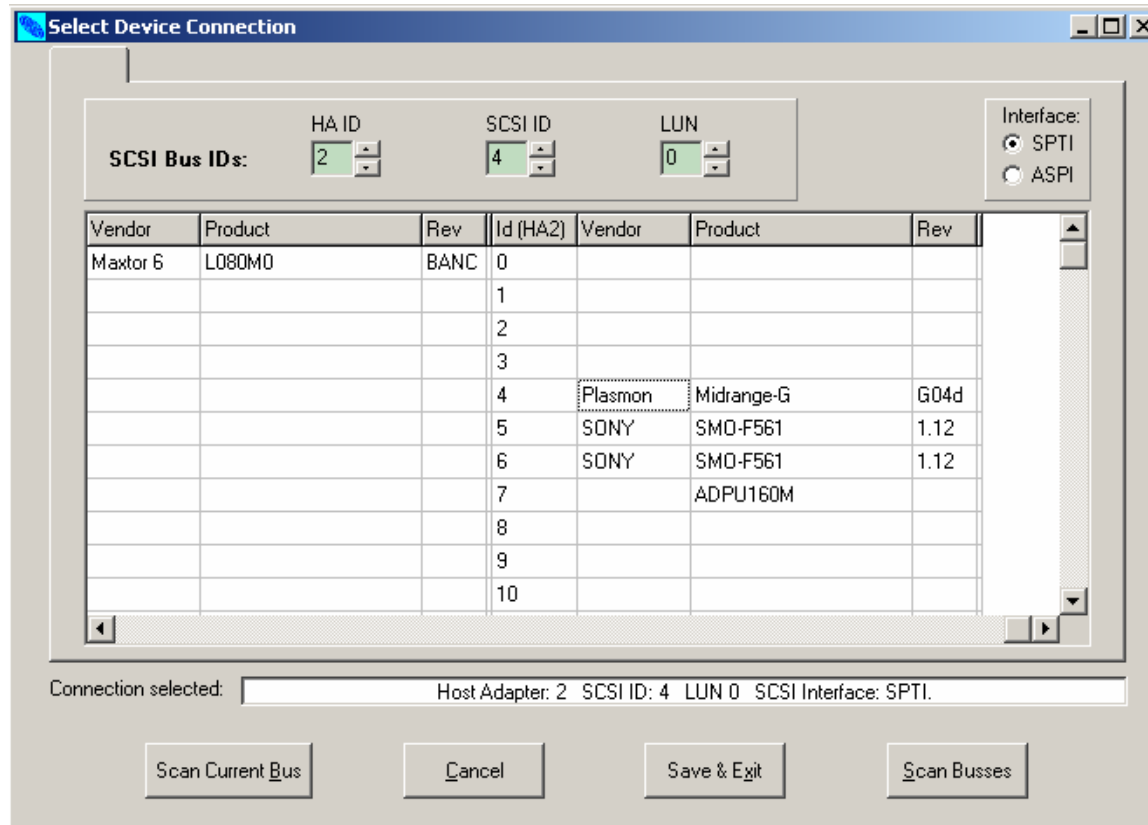
Enterprise G / G-Midrange / G Entry Level:  UDOapp.exe

UDO / MO Drives:  UDOapp.exe

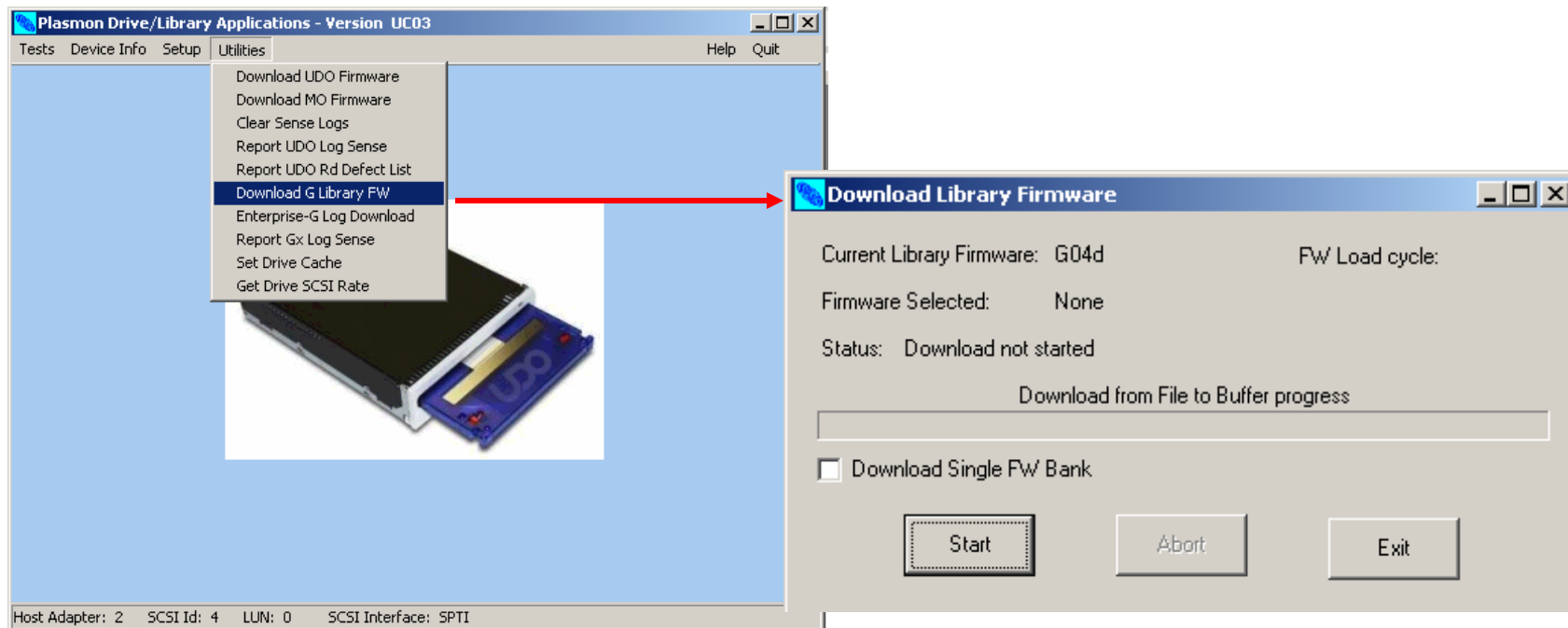
Step 5: Click on Setup on the tool bar.



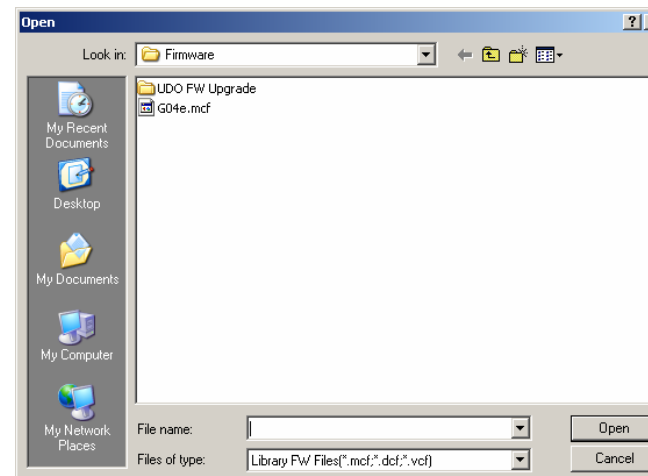
Step 6: The Select Device Connection window will appear. Press the **Scan Busses** button found in the lower right window. Look for the device that you want to download firmware to. If we want to select the **Plasmon Midrange-G**, as shown in the window, click on Plasmon and the **Save & Exit** button. The library is now selected. If we wanted to select the Sony SMO-F561 drive, that is shown, we would click on it and Save & Exit.



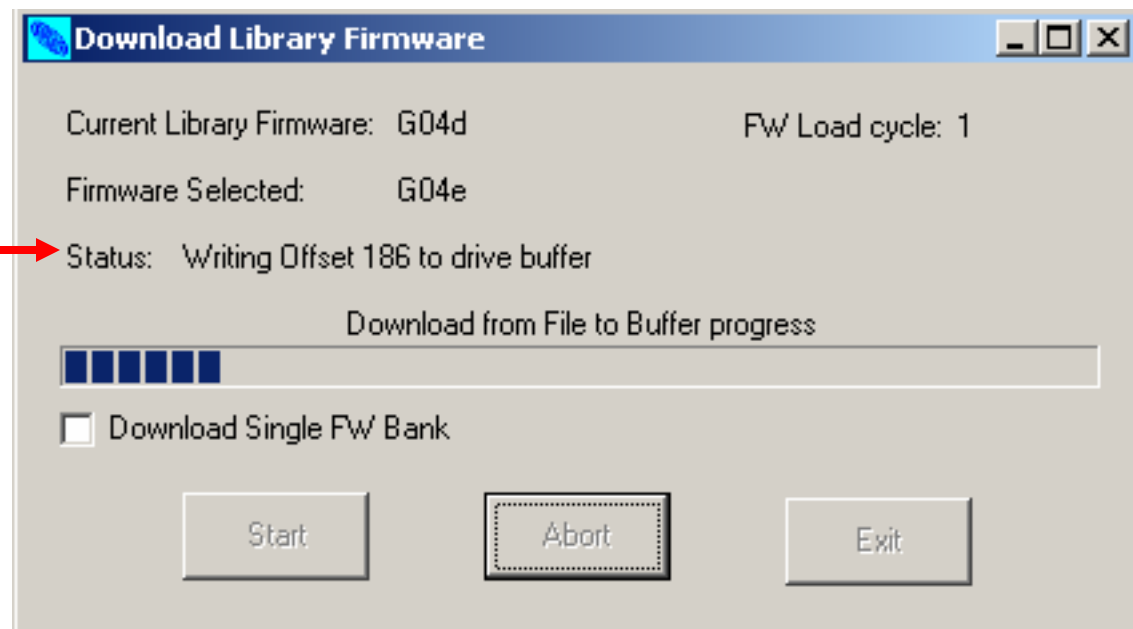
Step 7: Select **Utilities** in the tool bar. In the Utilities pull down menu select **Download G Library FW**. The Download Library Firmware window will appear.



Step 7: Click **Start** and the firmware folder will appear. Click on the firmware file that Plasmon provided.



Step 8: The firmware is downloading and a completion bar will appear in a few seconds. If the library is a Enterprise D ,Enterprise G, G Entry Level or G Midrange the firmware will download 2 times. The `FW Load cycle: 1` will provide you the firmware bank that is downloading. You will hear the library initializing between the downloads. Wait until the Download Library Firmware window displays `Status: Download Complete` . Once this message is displayed the download was successful.





Plasmon

You have successfully completed the firmware update of a library or drive. If you have questions contact Plasmon Product Support at 877-585-6793 prior to proceeding.