

UDO ARCHIVE

EXPRESS

QUICK START GUIDE



Overview

The Plasmon UDO™ Archive Appliance Express™ (hereafter referred to as AA Express™) is available in two form factors: A 2U rackmountable unit (the AA Express) and a desktop mini-tower unit (the AAE Desktop). There are minor differences between the two.

This Quick Start Guide will show you how to:

Hardware

AA Express:

- *Unpack the AA Express* - see page 3
- *Install the rack mount kit* - see page 4
- *Install the SATA disk drives and dummy shuttles* - see page 5
- *Connect the AA Express to the power and network* - see page 6

AAE Desktop:

- *Unpack the AAE Desktop* - see page 7
- *Connect the AAE Desktop to the power and network* - see page 8

Configuration

- *When using DHCP, install and use DiscoverAppliance™* - see page 9
- *When not using DHCP, configure the AA Express to a static IP address using the Serial console interface* - see page 16
- *Complete configuration of the AA Express using the Web interface* - see page 20.

Unpack the AA Express

The following items are included in the AA Express package.

Important: Check the list before installation to ensure each item is present. Contact your supplier immediately if anything is missing.



AA Express enclosure



SATA disk drive shuttles



Dummy drive shuttle(s)

Plus:

- Ethernet Cable
- AC Power Cable
- AA Express Quick Start Guide (this document)
- AA Express Resources CD
- AA Express User Training CD
- UDO WORM or UDO2 WORM Media (1 piece)
- UDO Cleaning Cartridge (UDO1 only) (1 piece)
- UDO Media Labels (5 Pack)
- Rack Mount Kit
- Declaration of Conformity
- Channel Warranty Sheet

Install the rack mount kit

If the AA Express is to be installed in a rack, the rack mount kit should be fitted and the unit installed in accordance with the [Rack Mounting Guide](#), which is included in the Rack Mount Kit.



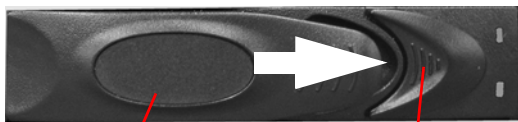
Install the SATA disk drives and dummy shuttles

The AA Express is equipped with at least two SATA disk drives. These fit into the unit in the shuttles provided. The following instructions detail how to install the drives into the unit.

1. Remove shuttle from anti-static bag.

Caution: Handle the SATA disk drives with care, as damage may result in unreliable operation and reduced lifespan.

2. Click the **Lock release button** to the right. The **Drive tray handle** will pop open.
3. Pull the **Drive tray handle** until it is pointing forward at a right angle to the shuttle.



Drive tray handle

Lock release button

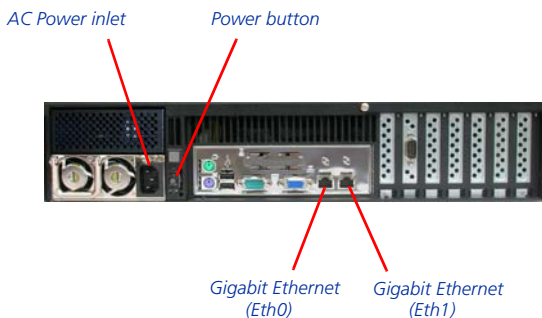
4. Slide the shuttle all the way into the unit - ensure that the **Drive tray handle** is still pointing outward.

Note: The SATA drives can be installed in any available slot.



5. Push the **Drive tray handle** closed until it clicks.
6. Repeat the above for each shuttle to be installed, and fill any empty bays with the supplied dummy shuttles.

Connect the AA Express to the power and network



AA Express rear panel

1. Connect the power cable to the AC power inlet.
2. Connect the Ethernet cable to the Ethernet (Eth0) port.

Note: The second Ethernet (Eth1) port can also be connected now, if required. A second Ethernet port can be used on the AA Express for port bonding, to provide load balancing and fail over protection. For further information, refer to the [Plasmon UDO Archive Appliance Express Administrator's Guide](#) located on the Resource CD or on the Plasmon Technical Support website: <http://www.plasmontech.com/customer/>

3. Press the power button, on the rear of the AA Express, to power on the unit.
The AA Express will take approximately three minutes to initialize and then be ready for use.

Unpack the AAE Desktop

The following items are included in the AAE Desktop package.

Important: Check the list before installation to ensure you have received each item. If you are missing any item, contact your supplier immediately.

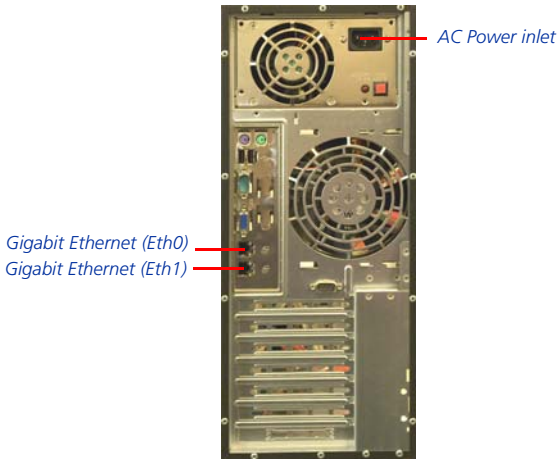


AAE Desktop enclosure with drives pre-installed

Plus:

- Ethernet Cable
- AC Power Cable
- AA Express Quick Start Guide (this document)
- AA Express Resources CD
- AA Express User Training CD
- UDO WORM or UDO2 WORM Media (1 piece)
- UDO Cleaning Cartridge (UDO1 only) (1 piece)
- UDO Media Labels (5 Pack)
- Declaration of Conformity
- Channel Warranty Sheet

Connect the AAE Desktop to the power and network



AAE Desktop rear panel

1. Connect the power cable to the AC power inlet.
2. Connect the Ethernet cable to the Ethernet (Eth0) port.

Note: The second Ethernet (Eth1) port can also be connected now, if required. A second Ethernet port can be used on the AAE Desktop for port bonding, to provide load balancing or fail over protection. For further information, refer to the [Plasmon UDO Archive Appliance Express Administrator's Guide](#) located on the Resource CD or on the [Plasmon Technical Support website: http://www.plasmontech.com/customer/](http://www.plasmontech.com/customer/)

3. Press the power button on the front of the AAE Desktop to power on the unit.
The AAE Desktop will take approximately three minutes to initialize and then be ready for use.

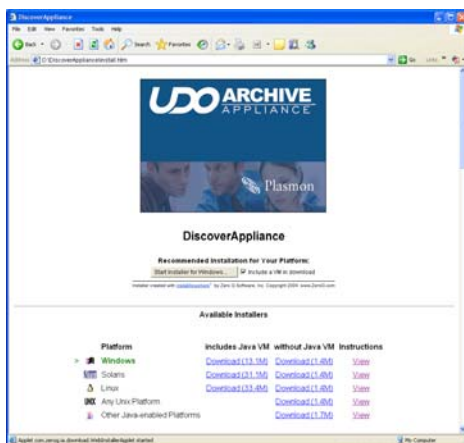
When using DHCP, install and use DiscoverAppliance™

The DiscoverAppliance utility allows you to locate an AA Express on your network when IP addresses are dynamically assigned using DHCP.

If your network does not use DHCP, you should refer to *When not using DHCP, configure the AA Express to a static IP address using the Serial console interface.*

Installing DiscoverAppliance

1. Insert the AA Express Resource CD into the CD-ROM drive of a LAN attached computer.
Browse the CD to the DiscoverAppliance directory and open the file install.htm.



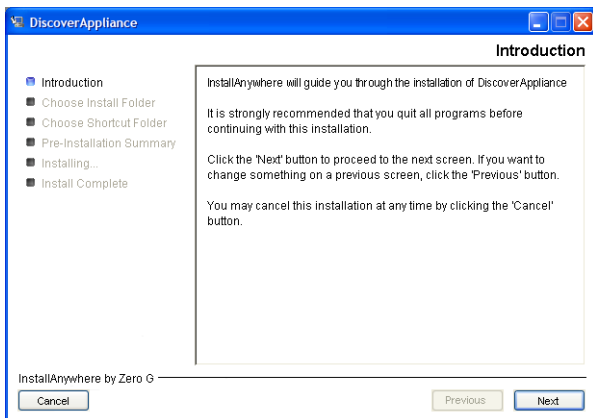
Note: DiscoverAppliance can also be downloaded from the Plasmon Technical Support website:
<http://www.plasmontech.com/customer/>

2. Click the **Install for ...** button to begin the installation.

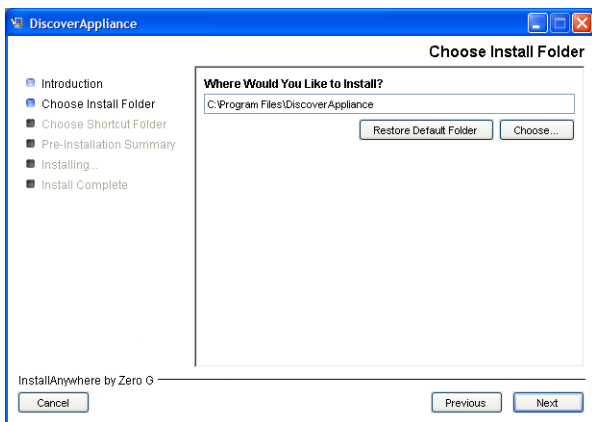
3. Select an Operating System from the list.

*Note: If you require Java VM and do not have it installed, select the installer which **includes Java VM**.*

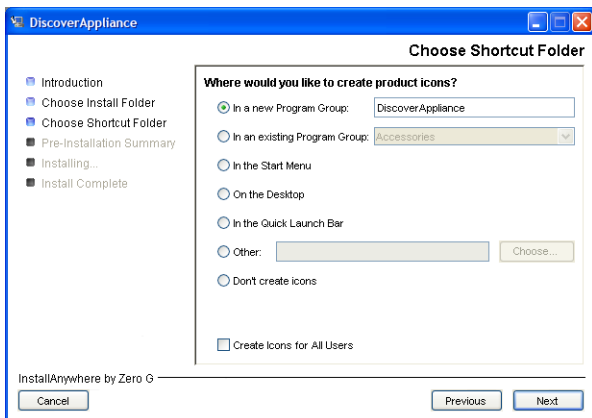
The DiscoverAppliance Installer will open:



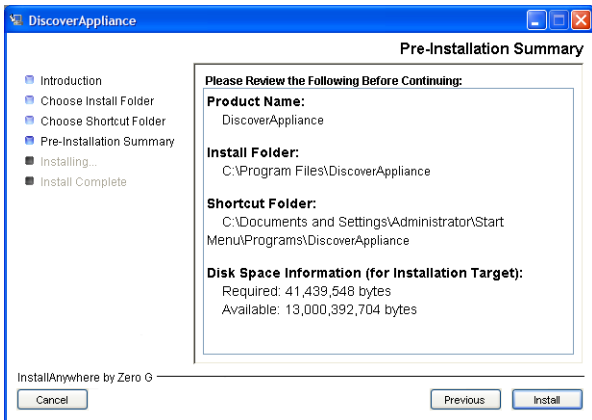
Click **Next**.



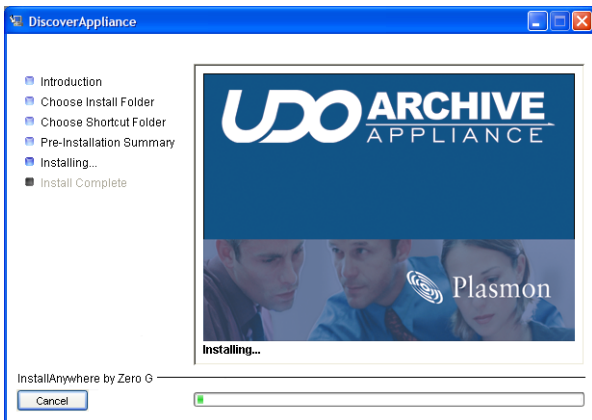
4. Choose an installation path and click **Next**.



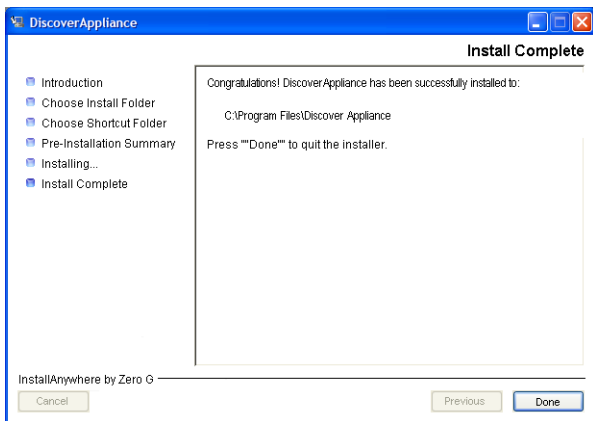
5. Choose where and how to create shortcuts and click **Next**.



- Review the summary and click **Install** to begin the installation.



- Wait for the installation to complete.



8. When the installation has finished click **Done** to quit the installer.

DiscoverAppliance is now ready for use.

Using DiscoverAppliance

To locate an AA Express on your network:

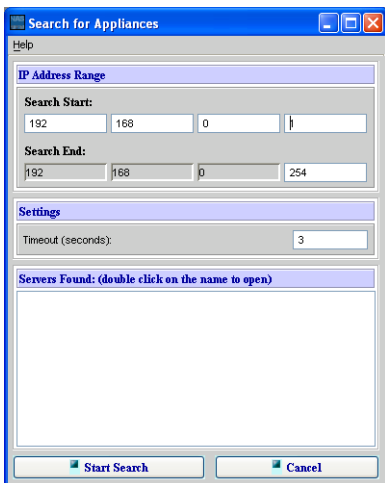
1. Open the DiscoverAppliance utility.
Double-click the DiscoverAppliance Icon:



DiscoverAppliance

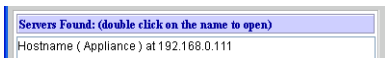
Or click

Start > Programs > DiscoverAppliance > DiscoverAppliance.exe




2. Enter an **IP Address Range** to search and, if required, a **Timeout** setting. Click **Start Search**.

Note: Ensure that the IP Address Range being searched is set to the same subnet as the AA Express.



When the search is complete, double-click on the AA Express you wish to open. This will launch the Web interface in your default web browser.

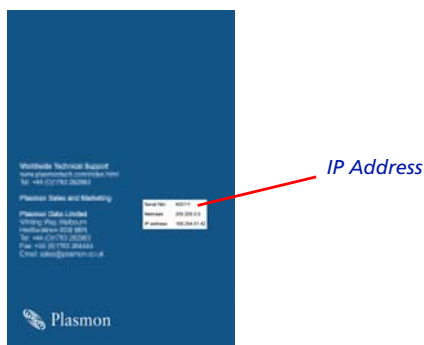


Note: Create a reservation for this address on the DHCP server once setup is complete.

When not using DHCP, configure the AA Express to a static IP address using the Serial console interface

By default the AA Express attempts connection using DHCP. If this connection is not made in three attempts, the unit will automatically use a static IP address.

Your unit's static IP address and Netmask can be found on the back of the AA Express Resource CD case, as shown below:

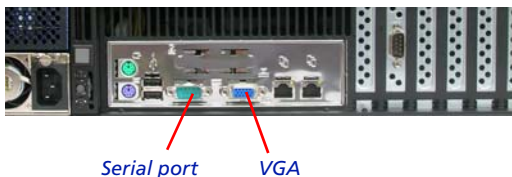


Note: IP addresses are in the format 169.254.X.X and the Netmask is set to 255.255.0.0

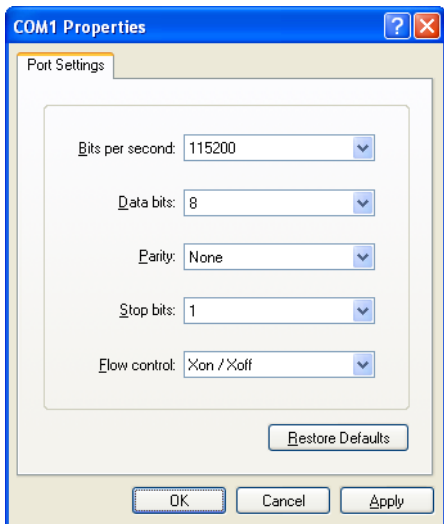
The following sections describe how to configure the AA Express using the Serial console interface.

Connect using a terminal emulator

1. Connect the Serial cable to the Serial port, shown below:



2. Use a terminal emulator (such as Microsoft HyperTerminal) to connect to the Serial console interface using the following settings:



Note: Emulation should be set to VT100J or Auto Detect. ANSI is not supported.

Change configuration via the Serial console interface

You are required to login to access the Serial console interface.

Note: There may be some delay before the Console Menu is available.

Note: There may be no visual indication that the connection is successful and the Console Menu is waiting for password entry.

1. Enter the password. The default password for the Serial console interface is *hello123*.

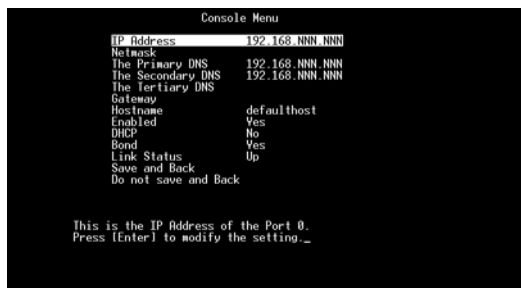
The Console Menu is displayed:

```
Console Menu
View System Information
Configure TCP/IP Information
Update Software
Restore Factory Defaults
Switch System console to Serial Console
Change root password
Reboot System
Exit to command prompt

Press [Enter] to go to Configure TCP/IP Information.
This may take a while to get the System TCP/IP Information...
```

2. Select **Configure TCP/IP Information**.

The TCP/IP Console Menu will be shown:



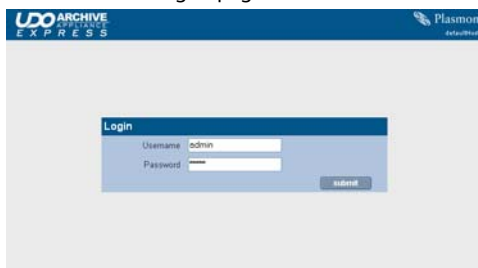
3. Select **DHCP**. Set to **No**.
4. Select **IP Address**. Enter the AA Express's new IP Address.
5. Repeat for **Netmask**, **Gateway** and other settings, as required, for your network.
6. When all applicable information has been entered, select **Save and Back** to return to the Console Menu.

Complete configuration of the AA Express using the Web interface

1. On a LAN-attached client, start a web browser (such as Microsoft Internet Explorer).
2. In the URL field, enter the IP address or hostname of the AA Express to configure. For example:

<http://192.168.0.1>

The Web interface log-in page loads:



3. Enter a valid AA Express Administrator User Name and Password.
 - This is not the same as a Windows Domain Administrator.
 - The default administrator username and password is **admin**. It is recommended that this is changed on first login ([Modifying a User's details](#) on page 42 of the AA Express Administrator's Guide).
 - The default administrator can be used to add or remove additional administrator accounts.
4. Click **OK**.
The Web Interface **System - Status** page is displayed.

The System - Status page

The System - Status page gives an overview of current system status and allows you to access all the system configuration and monitoring via a menu bar along the top of the page.

System - Status	
Activity	
 Last Backup:	2007/10/04 02:01:56
 Last Migration:	0 migration completed in the last 24 hours
 Last Recall:	0 recall completed in the last 24 hours
 Last Replication:	No archives scheduled to be replicated
Hardware	
 Environmental:	OK
 RAID(s):	OK
Media Management	
 Drive empty	
 No action required	


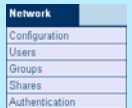

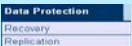
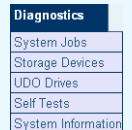



Menu bar




1. Hover the pointer over a top-level menu item to reveal sub-menu options, for example:

System
Status
Time & Date
Services
Software Update
Notification

2. Click on your chosen option:

Menu/Icon	Description
 <p>System Status Time & Date Services Software Update Notification</p>	Monitor the AA Express' status, set the time & date, monitor and configure the services, update the system software and configure alert notifications
 <p>Network Configuration Users Groups Shares Authentication</p>	Define the network configuration, users, groups and shares
 <p>Storage RAIDs Volumes Offline Media Media Requests Browse</p>	Configure RAIDs, volumes and the library, browse the volume, manage offline media and monitor media requests
 <p>Data Protection Recovery Replication</p>	Perform disaster recovery and configure replication
 <p>Diagnostics System Jobs Storage Devices UDO Drives Self Tests System Information</p>	Monitor system jobs and devices (disks, libraries, etc.), perform self tests, view system information (software version, serial numbers, hardware revisions, etc.) and create a log file bundle
 <p>Shutdown</p>	Reboot or shut down the AA Express.
	Display context-sensitive online help.
	Return to the Web interface System - Status page.

Menu/Icon	Description
	Log out of the current Web interface session.

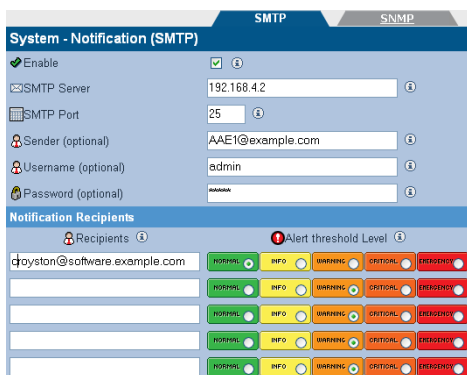
Add some media

Label some UDO media and insert the piece labelled **Sequence number 1** into the UDO drive.

For further information about the labelling, handling and use of UDO media, refer to the *Using the AA Express* chapter of the *Plasmon UDO Archive Appliance Express Operator's Guide*.

Set-up e-mail Alert notification

- From the menu bar, select **System - Notification**



System - Notification (SMTP)

SMTP SNMP

Enable

SMTP Server: 192.168.4.2

SMTP Port: 25

Sender (optional): AAE1@example.com

Username (optional): admin

Password (optional): *****

Notification Recipients

Recipients Alert threshold Level: **Warning**

toyston@software.example.com	<input checked="" type="radio"/> POPPING	<input type="radio"/> INFO	<input type="radio"/> WARNING	<input type="radio"/> CRITICAL	<input type="radio"/> EMERGENCY
	<input checked="" type="radio"/> POPPING	<input type="radio"/> INFO	<input type="radio"/> WARNING	<input type="radio"/> CRITICAL	<input type="radio"/> EMERGENCY
	<input checked="" type="radio"/> POPPING	<input type="radio"/> INFO	<input type="radio"/> WARNING	<input type="radio"/> CRITICAL	<input type="radio"/> EMERGENCY
	<input checked="" type="radio"/> POPPING	<input type="radio"/> INFO	<input type="radio"/> WARNING	<input type="radio"/> CRITICAL	<input type="radio"/> EMERGENCY
	<input checked="" type="radio"/> POPPING	<input type="radio"/> INFO	<input type="radio"/> WARNING	<input type="radio"/> CRITICAL	<input type="radio"/> EMERGENCY

Check services

1. From the menu bar, select **System - Services**

System - Services		
Service	Status	Action
CIFS	Started	stop
NFS	Stopped	start
FTP	Stopped	start
UPS	Stopped	start
Storage	Started	stop
SSM	Started	stop
Keypad	Started	stop

2. Ensure that the required services are running and/or **start** or **stop** services as required.

Run self-tests

1. From the menu bar, select **Diagnostics - Self Tests**

Diagnostics - Archive Test	
Self test	
Archive test	
Last run at N/A	
Test Not running	Status
Cache	PASS
Devices	PASS
Email	PASS
Services	PASS


2. Click **start**. Wait for the Self Test to complete.
3. Click the **Archive Test** tab.
4. Click **start**. Wait for the Archive Test to complete.
5. Ensure all self tests pass.

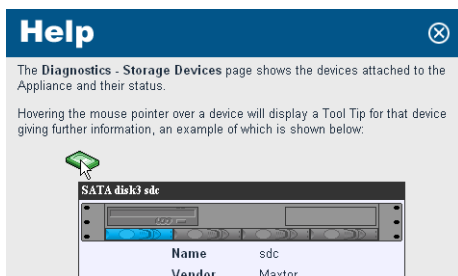
The AA Express is now ready for use.


Further information

Online help

Each page of the Web interface has an online help page associated with it. To access the on-line help:

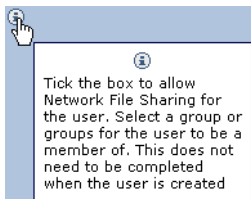
1. From the page you require help with, click the  icon. The online help page will open in a pop-up browser window. For example:



2. When finished with the on-line help, click the  icon to close the window.

Tool tips

Hovering the mouse pointer over the tool tip icon displays a text box detailing key features of that field or function, e.g.:



More help

For further information, refer to the following documentation:

- *Plasmon UDO Archive Appliance Express Administrator's Guide*
- *Plasmon UDO Archive Appliance Express Operator's Guide.*

or the Plasmon Technical Support website:

- <http://www.plasmontech.com/customer/>

Legal information

Copyright statement

No part of this publication may be reproduced in any form or by any means or used to make any derivative, such as translation, transformation, or adaptation, without permission from Plasmon PLC.

Trademarks

Plasmon, UDO, Archive Appliance Express, AA Express, SNAZ OS and DiscoverAppliance are registered trademarks of Plasmon PLC Copyright 2007.

Other names and/or trademarks belong to their respective proprietors.

Limited warranty

Plasmon PLC makes no representation or warranties with respect to the contents or use of this user's guide, and specifically disclaims any express or implied warranties of merchantability or fitness for any particular purpose.

Further, Plasmon PLC reserves the right to make revisions on this documentation without obligation to notify any person or entity of such changes.

Changes

The material in this user manual is for information only, and is subject to change without notice.

Plasmon PLC reserves the right to make changes in the product design and installation software without reservation and without notification to its users.

Additional information may be obtained from your supplier, or from the address on the back cover of this guide.

Worldwide Technical Support

Europe, Africa and Middle East

Tel: +44 (0)1763 262963

Fax: +44 (0)1763 264407

Web: <http://www.plasmontech.com>

Email: support@plasmon.co.uk

North America, South America and Asia/Pacific

Tel: +1-877-585-6793 or +1-719-593-4437

Fax: +1-719-593-4192

Web: <http://www.plasmontech.com>

Email: tech.support@plasmon.com

Sales

Plasmon Data Limited

Whiting Way,

Melbourn

Hertfordshire

SG8 6EN

United Kingdom

Plasmon Denver

370 Interlocken Blvd.,

Suite 600,

Broomfield,

CO 80021

United States of America

Tel: +44 (0)1763 264400

Fax: +44 (0)1763 264444

Web: <http://www.plasmon.com>

Email: sales@plasmon.co.uk

Tel: +1-720-873-2500

Fax: +1-720-873-2501

Web: <http://www.plasmon.com>

Email: sales@plasmon.com

